

AV

Venturi suction units

The Venturi AV/500 and AV/1000 vacuum generating system units are particularly suitable in all hospital applications in which it is necessary to get values of vacuum up to -850 mbar and where a central facility of vacuum generation for suction is missing, often for technical choice.

STRUCTURE

As it is well known, the physical principle called "Venturi" allows to get depression from a fluid under pressure, which is obtained, in case of these devices, using medical compressed air coming from the centralized distribution plant. Such devices are composed essentially of a brass chrome-plated body, a needle valve with vacuum adjustment knob and a vacuum gauge. The version AV/1000 fits also a quick I/O button switch and a large gauge, while in the version AV/500 a protective silicone cover on vacuum gauge avoids damages caused by possible impacts during transport or use.

The AV/500 and AV/1000 Venturi vacuum generating system units are manufactured with outlet threaded connection for screwing in the usual collection containers for suctioned fluids, or for direct connection to the EasySAFE® PLUS safety jar, through a specific quick release integrated connection.

Main information



Being the system working with a principle where medical air under pressure goes released to the environment, the equipment has a high efficiency silencer reducing the noise to allow an adequate level of comfort for patients and operators. The system fits a special device expressly designed and realized with an one-way safety valve, to protect the patient against accidental back pressures.

Related products



Safety jars
from p. 89



Collection jars
from p. 96



Probes
and Accessories
from p. 103

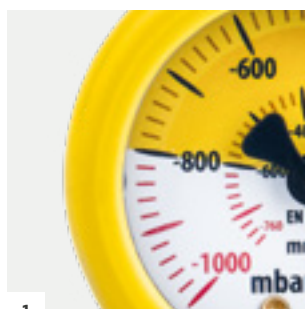
	AV/500	AV/1000
SIZES (LxWxH)	92x72x100 mm	104x72x132 mm
WEIGHT	0.50 Kg	0.83 Kg
MAX. SUCTION RANGE	40 L/min +5%	40 L/min +5%
VACUUM GAUGE SCALE	0 ÷ -1000 mbar	0 ÷ -1000 mbar
MAXIMUM ADJUSTABLE DEPRESSION (WITH PLATE PRESSURE ±10%)	-800 mbar/hPa -25 mbar/hPa	-850 mbar/hPa -25 mbar/hPa
GAS AND SUPPLY PRESSURE (STANDARD VERSION)	compressed air 400 kPa (4.0 bar) ±10%	
ADJUSTMENT OF SUCTION LEVEL	needle valve	
AIR CONSUMPTION AT THE MAX. SUCTION VALUE	60 L/min. ±2 L/min.	
NOISE LEVEL	<70 dB	
INLET CONNECTION	ISO G. 1/4" M.	
OUTLET CONNECTION	ISO G. 1/2" M. + quick release system for EASYSAFE® or EasySAFE® PLUS safety jar connection	

- 1 **Vacuum gauge** with colored sectors scale, for easy reading of set vacuum values.
- 2 The **adjusting knob** allows the suction value setting in a stable and accurate way.
- 3 A quick **I/O button** switch is available on **AV/1000** Venturi unit for immediate suction activation or deactivation.
- 4 On **AV/1000** unit a high performance silencer reduces the noise giving comfort to the patient and health operators during the use.
- 5 Quick release system for **EasySAFE® PLUS** or **EASYSAFE®** safety jar connection.
- 6 **AV/500** and **AV/1000** with direct connection to **EasySAFE® PLUS** p. 90



AV/500

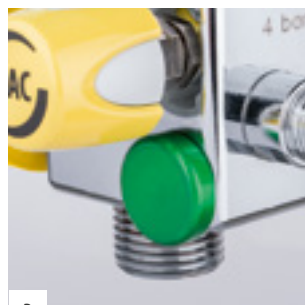
AV/1000



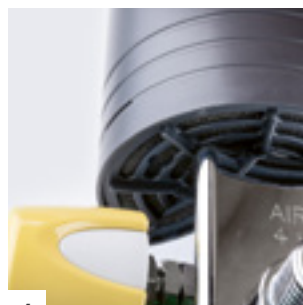
1



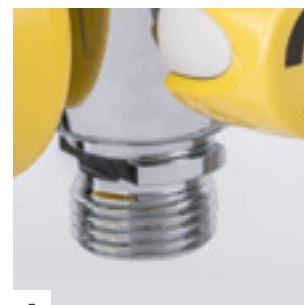
2



3



4



5