

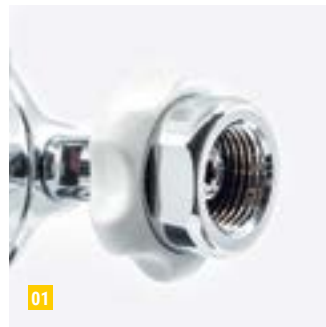
# FM

## PRESSURE REGULATORS FOR OXYGEN THERAPY

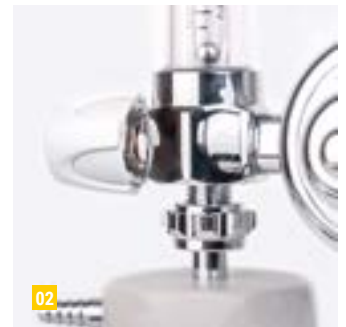
The single-stage **FM** pressure regulators, in their application in oxygen, are suitable for direct mounting on oxygen cylinders.

They are produced with oxygen cylinder connection fitting in the different reference standards of the destination Countries and with a direct connection to a **Rs** series variable area flowmeter. This is supplied in some options regarding the scale reading values and the outlet threads, suitable to connect a humidifier or a simple hose connector. The **FM** pressure regulators are designed for use with preset outlet pressure value.

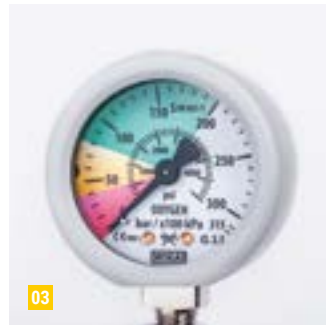
The structure and the fittings are in brass and the pressure relief valve is pre-calibrated, to guarantee protection in case of any system failure. A protective silicone cover prevents gauge damages caused by possible shocks received during transport or use.



01



02



03

01 EXAMPLE OF ONE OF MANY CONNECTIONS TO THE CYLINDER

02 DIRECT CONNECTION TO A **Rs** FLOWMETER

03 PROTECTIVE SILICONE COVER


**TECHNICAL SPECIFICATIONS | FM single gauge for oxygen therapy with humidifier**

	MAX. SIZES (LxWxH)	MAX. WEIGHT
VERSION WITH HOSE CONNECTION ON OUTLET	100x178x161 mm	1.24 Kg
VERSION WITH HUMIDIFIER ON OUTLET	108x180x320 mm	1.40 Kg
MAXIMUM INLET PRESSURE	200 bar	
GASES OPTIONS	O <sub>2</sub> • AIR	
STANDARD FLOW RANGE	5 L/min. • 10 L/min. • 15 L/min. • 30 L/min. • 50 L/min.	
FLOWMETER ACCURACY	±10% read value or ±0.5 L/min. (±0.2 L/min. for flow < than 1 L/min.) if greater	
INLET CONNECTIONS	UNI 11144 • EN 850 • NF-E 29-656 • BS 341-3 • DIN 477-1 • ISO 5145 • CGA 540	
FLOWMETER OUTLET CONNECTION	1/4" ISO 3253 M. • 3/8" ISO 3253 M. • M12x1.25 M. • 9/16" UNF EN 13544-2 M.	