

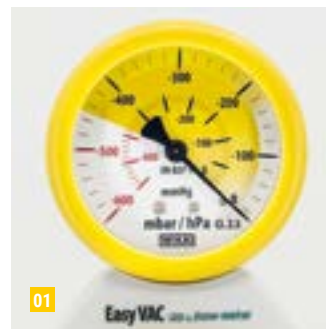
EasyVAC[®] PLUS

VACUUM REGULATORS

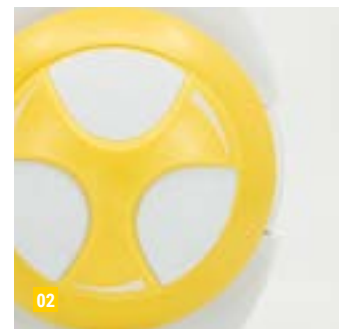
The **EasyVAC[®] PLUS** continuous suction vacuum regulators range is suitable in all medical suction applications in hospitals and nursing homes.

The device is made of a strong techno-polymer body, with a quick I/O switch button, a suction adjustment Soft Grip inserts knob for an easy handling with a "Push & Lock" position system and a vacuum control gauge with three possible end-of-scale choices: -250 mbar, -600 mbar and -1000 mbar. A protective silicone cover and a techno-polymer support prevent gauge damages caused by possible shocks received during transport or use. The **EasyVAC[®] PLUS** vacuum regulators are manufactured with outlet threaded connection for screwing in the usual collection containers for suctioned fluids, or for direct connection to the **EasySAFE[®] PLUS** safety jar, through a specific quick release integrated connection. The use of the **EasySAFE[®] PLUS** safety jar is highly recommended to get a complete suction device able to guarantee total protection of the vacuum regulator and plant.

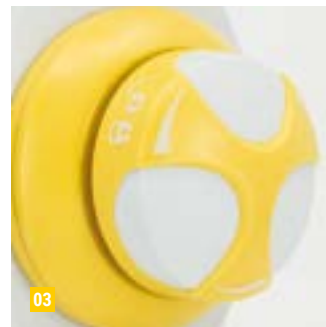
The small sizes of the **EasyVAC[®] PLUS** vacuum regulators help in installing multiple sets of medical gas devices into the wall terminal units. The quick opening of the front cover facilitates the cleaning and maintenance procedures. The extreme rationality and simplicity, combined with the sophisticated technical execution, allow both operators and patients to appreciate the safety and reliability of this medical device.



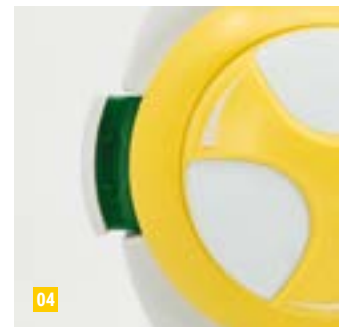
01



02



03



04



05

01 VACUUM GAUGE WITH COLORED SECTORS SCALE, FOR EASY READING OF SET VACUUM VALUES. SILICONE COVER AND ANTI SHOCK SUPPORT

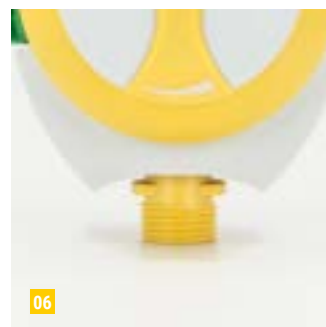
02 ADJUSTMENT ASSEMBLY QUICK RELEASE COVER 1/12 TURN

03 VACUUM ADJUSTING KNOB WITH PUSH&LOCK SYSTEM AND SOFT GRIP INSERTS FOR EASY HANDLING

04 QUICK I/O PUSH SWITCH-BUTTON

05 DE-PRESSURE EXCESS SAFETY VALVE (FOR **EasyVAC[®] PLUS 250** AND **EasyVAC[®] PLUS 600** ONLY) WITH ANTI-CLOGGING SYSTEM

06 ISO G. 1/2" M. + QUICK RELEASE SYSTEM FOR **EasySAFE[®] PLUS** OR **EASYSAFE[®]** SAFETY JAR CONNECTION



06

EXCELLENCE IN INNOVATION
BREAKTHROUGH TECHNOLOGY
INTELLIGENT DESIGN



**EasyVAC® PLUS 1000**WITH EasySAFE® PLUS
SAFETY JAR (OPTIONAL)**EasyVAC® PLUS 600**WITH EasySAFE® PLUS
SAFETY JAR (OPTIONAL)**EasyVAC® PLUS 250**WITH EasySAFE® PLUS
SAFETY JAR (OPTIONAL)

➤ EasySAFE® PLUS SAFETY JAR, PAGE 60

TECHNICAL SPECIFICATIONS	EasyVAC® PLUS 250	EasyVAC® PLUS 600	EasyVAC® PLUS 1000
SIZES (LxWxH)	91x106x185 mm		
WEIGHT	0.47 Kg	0.37 Kg	0.37 Kg
MAXIMUM SUCTION FLOW	50 L/min. ±5 L/min. at -220 mbar	72 L/min. ±5 L/min. at -550 mbar	115 L/min. ±5 L/min. at -950 mbar
MAXIMUM AVAILABLE NEGATIVE PRESSURE EFFECTIVE VALUE	-220 mbar ±20 mbar	-550 mbar ±20 mbar	-950 mbar
OVER DEPRESSION PROTECTING VALVE	preset with anti-clogging system	preset with anti-clogging system	N/A
VACUUM GAUGE	0 ÷ -250 mbar	0 ÷ -600 mbar	0 ÷ -1000 mbar
MAXIMUM DEPRESSION SUPPLY VALUE	-950 mbar		
SUCTION VALUE ADJUSTMENT SYSTEM	with membrane		
STANDARD INLET CONNECTION	ISO G. 1/4" M		
OUTLET CONNECTION	ISO G. 1/2" M. + quick release system for EASYSAFE® or EasySAFE® PLUS safety jar connection		
I/O SWITCH	quick push switch button		