



## FLOWSWITCHES

The flowswitches type FF, IF, CF are equipment for all the applications where a flow control inside the pipelines is required. The control is done by one or two switch groups intervening at the reaching of a preset range. The working simplicity and the good quality of the construction materials make these instruments very reliable in the flow regulation for all industrial

applications. Other features besides the ones already mentioned are:

- possibility of construction with threaded, flanged or welding connections;
- different construction materials depending on the fluids to be controlled.

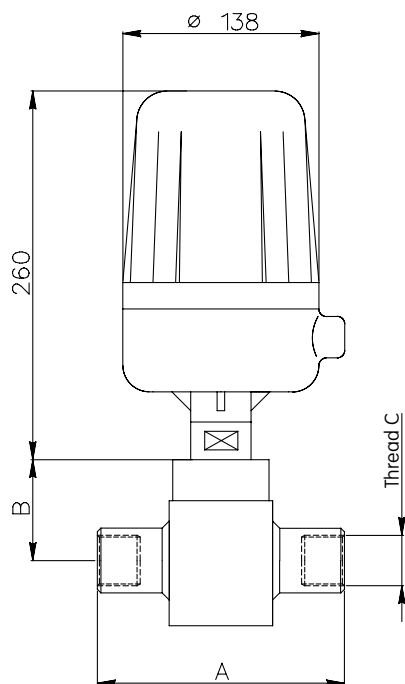


## Flowswitches type CF

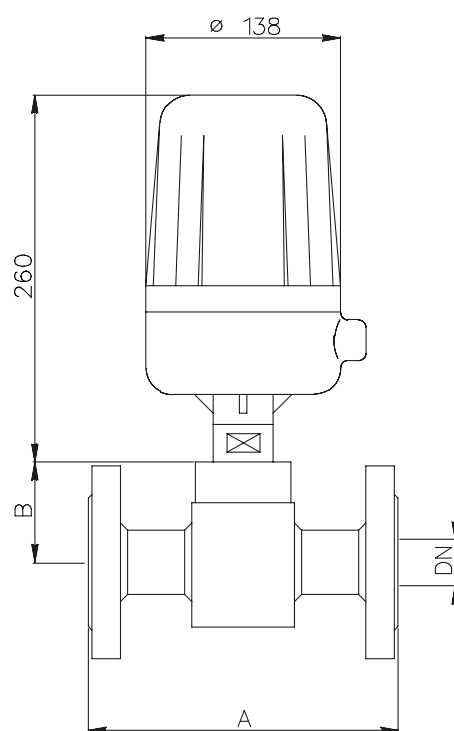
The flowswitches type CF are valve body switches for minimum or maximum range alarm with one intervention point. They are suitable for all applications where there are working pressures up to 64 bar and temperatures up to 250° C. and they have to be mounted on horizontal pipelines. They can be constructed with threa-

ded, flanged or welding connections, with carbon steel or stainless steel body. The electric part is contained in a weatherproof case made of die-casted aluminium with IP 65 protection (standard type) or in a flameproof case following EN 50.018 (CEI 31.1) - EEx-d IIB T6 or EEx-d IIC T6 (request type) with threaded electric connection 1/2" UNI

6125 F. The flowswitches type CF are supplied complete with switch groups on which only one SPDT contact is mounted. On request they can be supplied with two contacts in parallel.



Threaded connections



Flanged connections



BODY	Standard MAX. TEMPERATURE	MAX. TEMPERATURE with cooling fin
Carbon steel	120° C.	250° C.
S/S AISI 304	120° C.	250° C.
S/S AISI 316	120° C.	250° C.

TYPE	A		B	C		FLANGE DN		H <sub>2</sub> O m <sup>3</sup> /h max. flow
	THREADED	FLANGED		GAS	NPT	PN16 - UNI 2223	ANSI B16.5 - 150 LB	
CF 15	180	142	55	1/2"	1/2"	15	1/2"	1
CF 20	180	142	55	3/4"	3/4"	20	3/4"	1
CF 25	180	142	55	1"	1"	25	1"	1
CF 32	180	142	55	1" 1/4	1" 1/4	32	1" 1/4	1
CF 40	210	180	75	1" 1/2	1" 1/2	40	1" 1/2	2,7
CF 50	210	180	75	2"	2"	50	2"	2,7

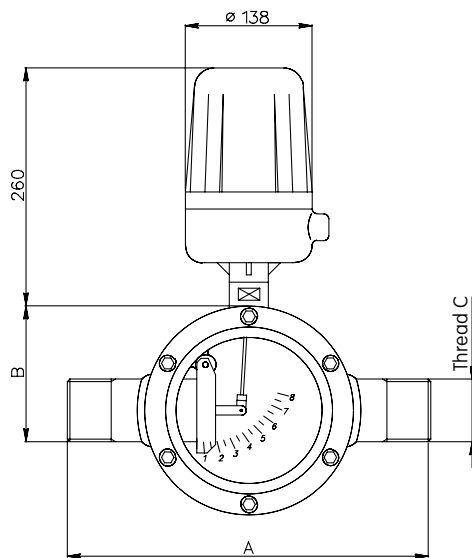


## Flowswitches type IF 50

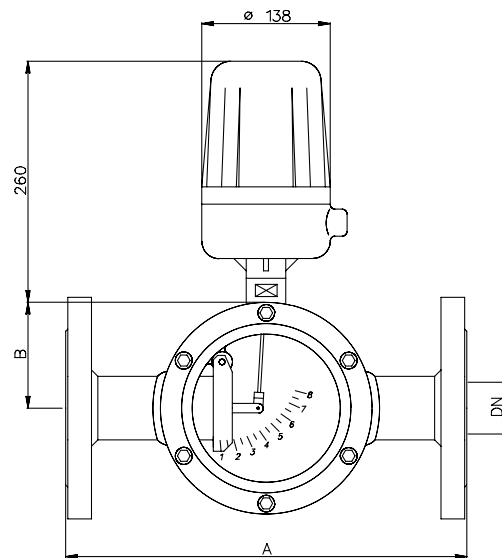
The flowswitches type IF 50 are paddle type flowswitches with instant range indication for mounting on horizontal pipelines and with one or two intervention points. They are suitable for all applications where there are working pressures up to 10 bar and temperatures up to 200° C. and their intervention points are adjustable on the

whole working range. They can be constructed with flanged, threaded or welding connections and their body can be made of different kinds of materials as stated in the above table. The electric part is contained in a weatherproof case made of diecasted aluminium with IP 65 protection (standard type) or in a flameproof

case following EN 50.018 (CEI 31.1) - EEx-d IIB T6 or EEx-d IIC T6 (request type) with threaded electric connection 1/2" UNI 6125 F. The flowswitches type IF 50 are supplied complete with switch groups on which only one SPDT contact is mounted. On request they can be supplied with two SPDT contacts in parallel.



Threaded connections



Flanged connections



BODY	Standard MAX. TEMPERATURE	MAX. TEMPERATURE with cooling fin
Carbon steel	120° C.	200° C.
S/S AISI 304	120° C.	200° C.
S/S AISI 316	120° C.	200° C.

TYPE	A	B	FLANGE DN		C	H <sub>2</sub> O m <sup>3</sup> /h max. flow	P. MAX. bar
			PN16 - UNI 2223	ANSI B16.5 - 150 LB			
IF 50/40	260	74	40	1" 1/2	G 1" 1/2	12	10
IF 50/50	280	74	50	2"	G 2"	20	10
IF 50/65	300	84	65	2" 1/2	G 2" 1/2	40	8
IF 50/80	330	105	80	3"	G 3"	60	8
IF 50/100	400	121	100	4"	G 4"	150	8

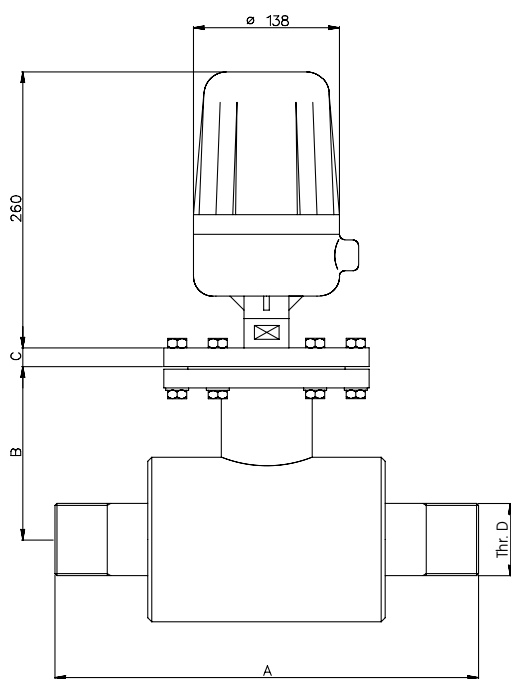


## Flowswitches type IF 70

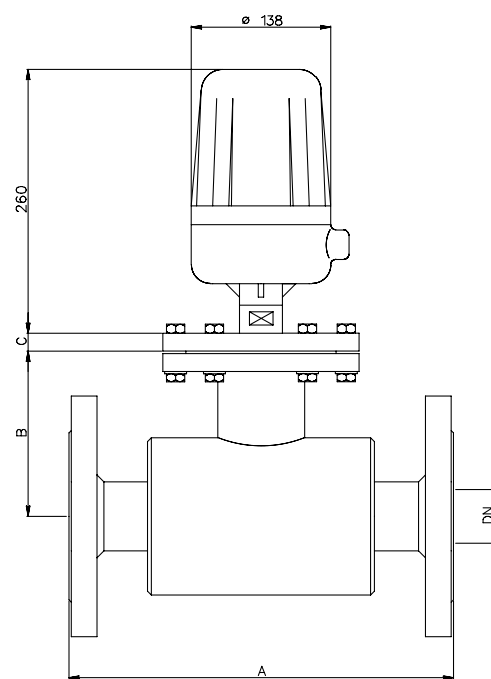
The flowswitches type IF 70 are paddle type flowswitches for mounting on horizontal pipe-lines with one or two intervention points. They are suitable for all applications where there are working pressures up to 64 bar and temperatures up to 250° C. and their intervention points are adjustable on the whole working range. They can

be constructed with flanged, threaded or welding connections and with body made of different kinds of materials as stated in the above table. The electric part is contained in a weatherproof case made of diecasted aluminium with IP 65 protection (standard type) or in a flameproof case following EN 50.018 (CEI 31.1) - EEx-d IIB

T6 or EEx-d IIC T6 (request type) with threaded electric connection 1/2" UNI 6125 F. The flowswitches type IF 70 are supplied complete with switch groups on which only one SPDT contact is mounted. On request they can be supplied with two SPDT contacts in parallel.



Threaded connections

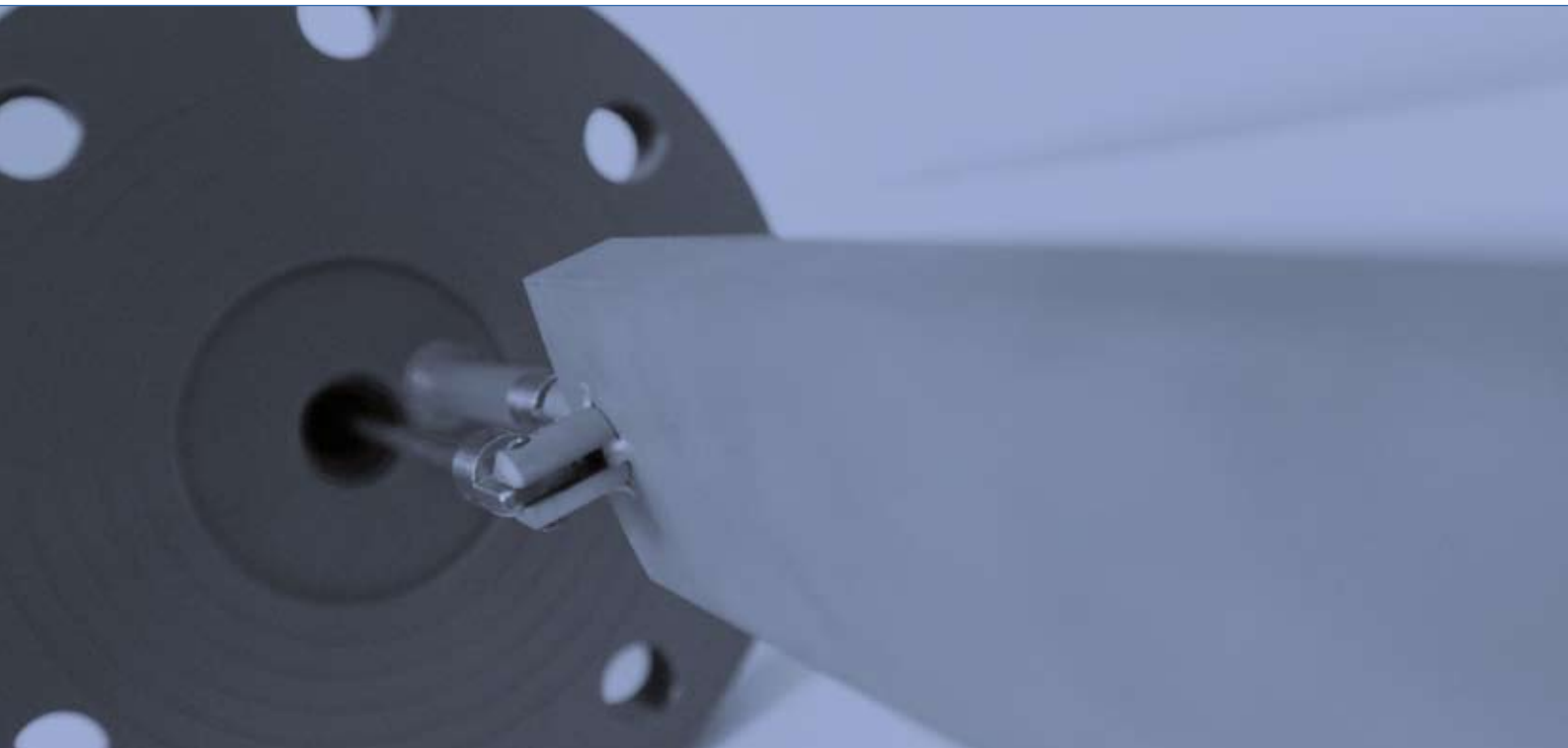


Flanged connections



BODY	Standard MAX. TEMPERATURE	MAX. TEMPERATURE with cooling fin
Carbon steel	120° C.	200° C.
S/S AISI 304	120° C.	200° C.
S/S AISI 316	120° C.	200° C.

TYPE	A	B	FLANGE DN		C	D	H <sub>2</sub> O m <sup>3</sup> /h max flow
			PN16 - UNI 2223	ANSI B16.5 - 150 LB			
IF 70/50	280	137	50	2"	20	G 2"	20
IF 70/65	300	137	65	2" 1/2	22	G 2" 1/2	40
IF 70/80	330	137	80	3"	24	G 3"	60

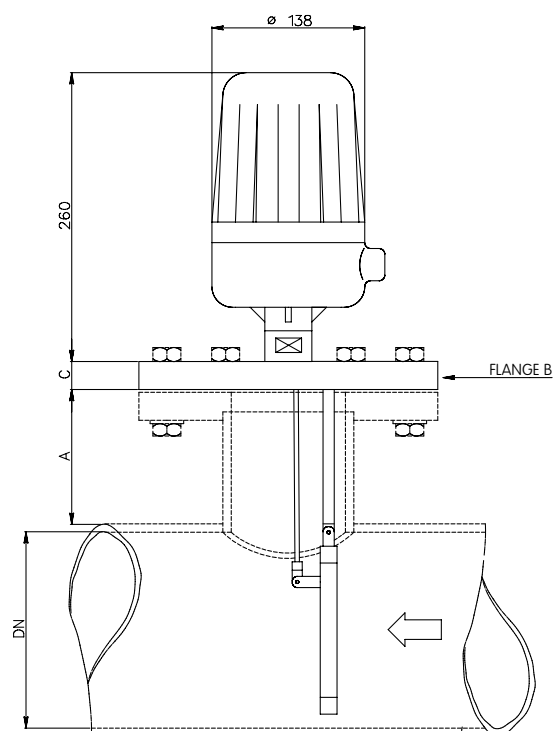


## Flowswitches type FF 40

The flowswitches type FF 40 are paddle type flowswitches for mounting on horizontal pipelines with one or two intervention points. They are suitable for all applications where there are working pressures up to 64 bar and temperatures up to 250° C. and their intervention point is adjustable on the whole working range. On request they are

supplied complete with sleeves to be welded on the pipeline. The electric part is contained in a weatherproof case made of diecasted aluminium with IP 65 protection (standard type) or in a flameproof case following EN 50.018 (CEI 31.1) - EEx-d IIB T6 - EEx-d IIB T6 (request type) with threaded electric connection 1/2" UNI 6125 F.

The flowswitches type FF 40 are supplied complete with switch groups on which only one SPDT contact is mounted. On request they can be supplied with two SPDT contacts in parallel.





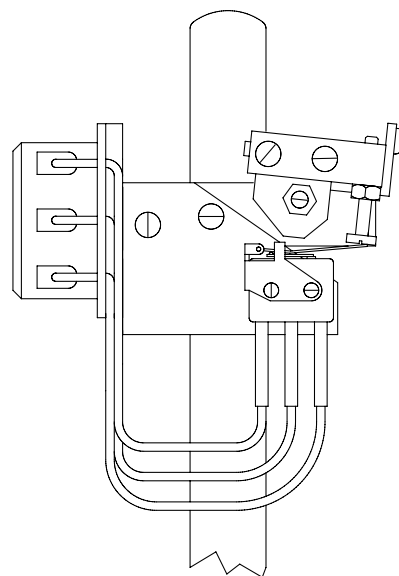
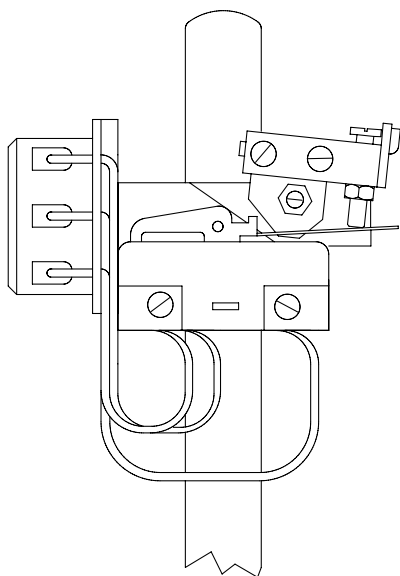


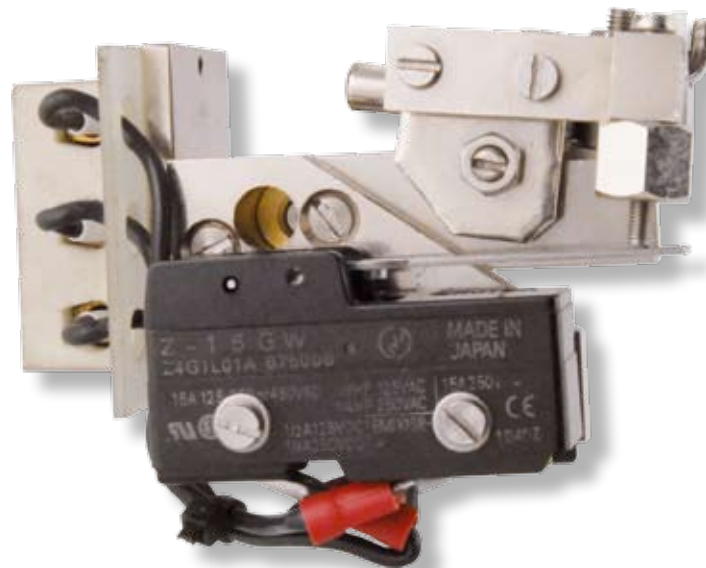
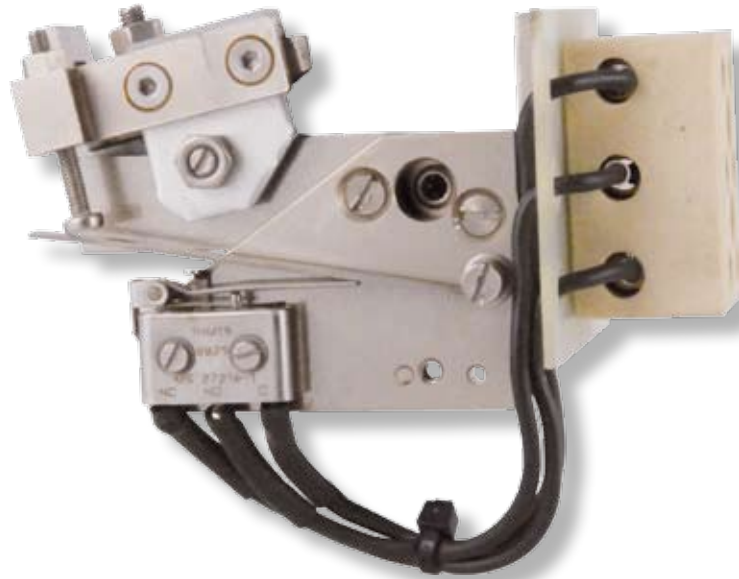
BODY	Standard MAX. TEMPERATURE	MAX. TEMPERATURE with cooling fin
Carbon steel	120° C.	250° C.
S/S AISI 304	120° C.	250° C.
S/S AISI 316	120° C.	250° C.

TYPE	A	FLANGE B		DN	C
		PN16 - UNI 2223	ANSI B16.5 - 150 LB		
FF 40	85	DN 50-DN 65 DN 80-DN 100	2" - 2" 1/2 - 3" - 4"	≥ DN 80	Standard thickness: see tables UNI-ANSI



## Electrical switch groups and accessories





**ELECTRICAL VALUES**

TYPE	V	A	Hz	FOR TYPE
Dry microswitch	500	5	50 - 60	CF-IF50-IF70-FF40
Microswitch sealed in inert gas	115	3	50 - 400	CF-IF50-IF70-FF40
Hg bulb	250	5	50 - 60	CF-IF50-IF70-FF40
Weatherproof sealed microswitch	500	5	50 - 60	CF-IF50-IF70-FF40

**ACCESSORIES**

Cooling fin to extend the working temperature max. value	CF - IF50 - IF70 - FF40
Flameproof electric case EN 50.018 (CEI 31.1) - EEx-d IIB T6 - EEx-d IIC T6	CF - IF50 - IF70 - FF40