

# EasyVAC<sup>®</sup> PLUS

Vacuum regulators



Excellence in **INNOVATION**  
Breakthrough **TECHNOLOGY**  
Intelligent **DESIGN**

The EasyVAC<sup>®</sup> PLUS continuous suction vacuum regulators range is suitable in all medical suction applications in hospitals and nursing homes.

## STRUCTURE

The device is made of a strong techno-polymer body, with a quick I/O switch button, a suction adjustment Soft Grip inserts knob for an easy handling with a "Push & Lock" position system and a vacuum control gauge with three possible end-of-scale choices: -250 mbar, -600 mbar and -1000 mbar. A protective silicone cover and a techno-polymer support prevent gauge damages caused by possible shocks received during transport or use. The EasyVAC<sup>®</sup> PLUS vacuum regulators are manufactured with outlet threaded connection for screwing in the usual collection containers for suctioned fluids, or for direct connection to the EasySAFE<sup>®</sup> PLUS safety jar, through a specific quick release integrated connection. The small sizes of the EasyVAC<sup>®</sup> PLUS vacuum regulators help in installing multiple sets of medical gas devices into the wall terminal units. The extreme rationality and simplicity, combined with the sophisticated technical execution, allow both operators and patients to appreciate the safety and reliability of this medical device.

## Main information



EasyVAC<sup>®</sup> PLUS has a vacuum control gauge with double scale and it is available in three possible end of scale choices.



The quick opening of the front cover facilitates the cleaning and maintenance procedures.

## Related products



Safety jars  
from p. 89



Collection jars  
from p. 96



Probes  
and Accessories  
from p. 103

	EasyVAC <sup>®</sup> PLUS 250	EasyVAC <sup>®</sup> PLUS 600	EasyVAC <sup>®</sup> PLUS 1000
<b>SIZES (LxWxH)</b>	91x106x185 mm		
<b>WEIGHT</b>	0.47 Kg	0.37 Kg	0.37 Kg
<b>MAXIMUM SUCTION FLOW</b>	50 L/min. ±5 L/min. at -220 mbar	72 L/min. ±5 L/min. at -550 mbar	105 L/min. ±5 L/min. at -950 mbar
<b>MAXIMUM AVAILABLE NEGATIVE PRESSURE EFFECTIVE VALUE</b>	-220 mbar ±20 mbar	-550 mbar ±20 mbar	-950 mbar
<b>OVER DEPRESSION PROTECTING VALVE</b>	preset with anti-clogging system	preset with anti-clogging system	N/A
<b>VACUUM GAUGE</b>	0 ÷ -250 mbar	0 ÷ -600 mbar	0 ÷ -1000 mbar
<b>MAX. DEPRESSION SUPPLY VALUE</b>	-950 mbar		
<b>SUCTION VALUE ADJUSTMENT SYSTEM</b>	with membrane		
<b>STANDARD INLET CONNECTION</b>	ISO G. 1/4" M		
<b>OUTLET CONNECTION</b>	ISO G. 1/2" M. + quick release system for <b>EASYSAFE<sup>®</sup></b> or <b>EasySAFE<sup>®</sup> PLUS</b> safety jar connection		
<b>I/O SWITCH</b>	quick push switch button		

- 1 **Vacuum gauge** with colored sectors and double scale (mbar/hPa or mmHg), for easy reading of set vacuum values. Silicone cover and anti shock support.
- 2 **Quick I/O** push switch-button.
- 3 **Vacuum adjusting knob** with Push&Lock system and Soft Grip inserts for easy handling. Adjustment assembly **quick release cover** 1/12 turn.
- 4 De-pressure excess safety valve (for **EasyVAC® PLUS 250** and **EasyVAC® PLUS 600** only) with anti-clogging system.
- 5 ISO G. 1/2" M. + quick release system for **EasySAFE® PLUS** or **EASYSAFE®** safety jar connection.



▶ WATCH THE VIDEO



EasyVAC® PLUS 250



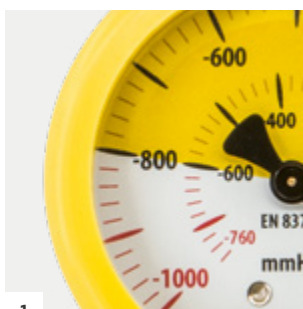
EasyVAC® PLUS 600



EasyVAC® PLUS 1000  
with EasySAFE® PLUS safety jar  
(optional)

EasySAFE® PLUS safety jar p. 90

The use of the **EasySAFE® PLUS** safety jar is highly recommended to get a complete suction device able to guarantee total protection of the vacuum regulator and plant.



1



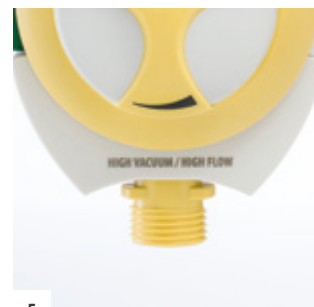
2



3



4



5