

EASYVAC®

Vacuum regulators

The EASYVAC® continuous suction vacuum regulator is particularly suitable for all medical suction applications in hospitals and nursing homes.

STRUCTURE

The device is made of a strong techno-polymer body, with a quick I/O switch-button, a suction adjustment knob and a control vacuum gauge with three possible end-of-scale choices: -250 mbar, -600 mbar and -1000 mbar. A protective silicone cover prevents gauge damages caused by possible shocks received during transport or use.

The EASYVAC® vacuum regulators are also designed, through a threaded connection, for connecting directly or indirectly to the normal collection containers for suctioned fluids or for direct connection to the EASYSAFE® safety jar, through a specific quick release integrated connection.

The extreme rationality and simplicity, combined with the sophisticated technical execution, allow both operators and patients to appreciate the safety and reliability of this medical device.

Main information



EASYVAC® has a vacuum control gauge with double scale and it is available in three possible end of scale choices.

Related products



Safety jars
from p. 89



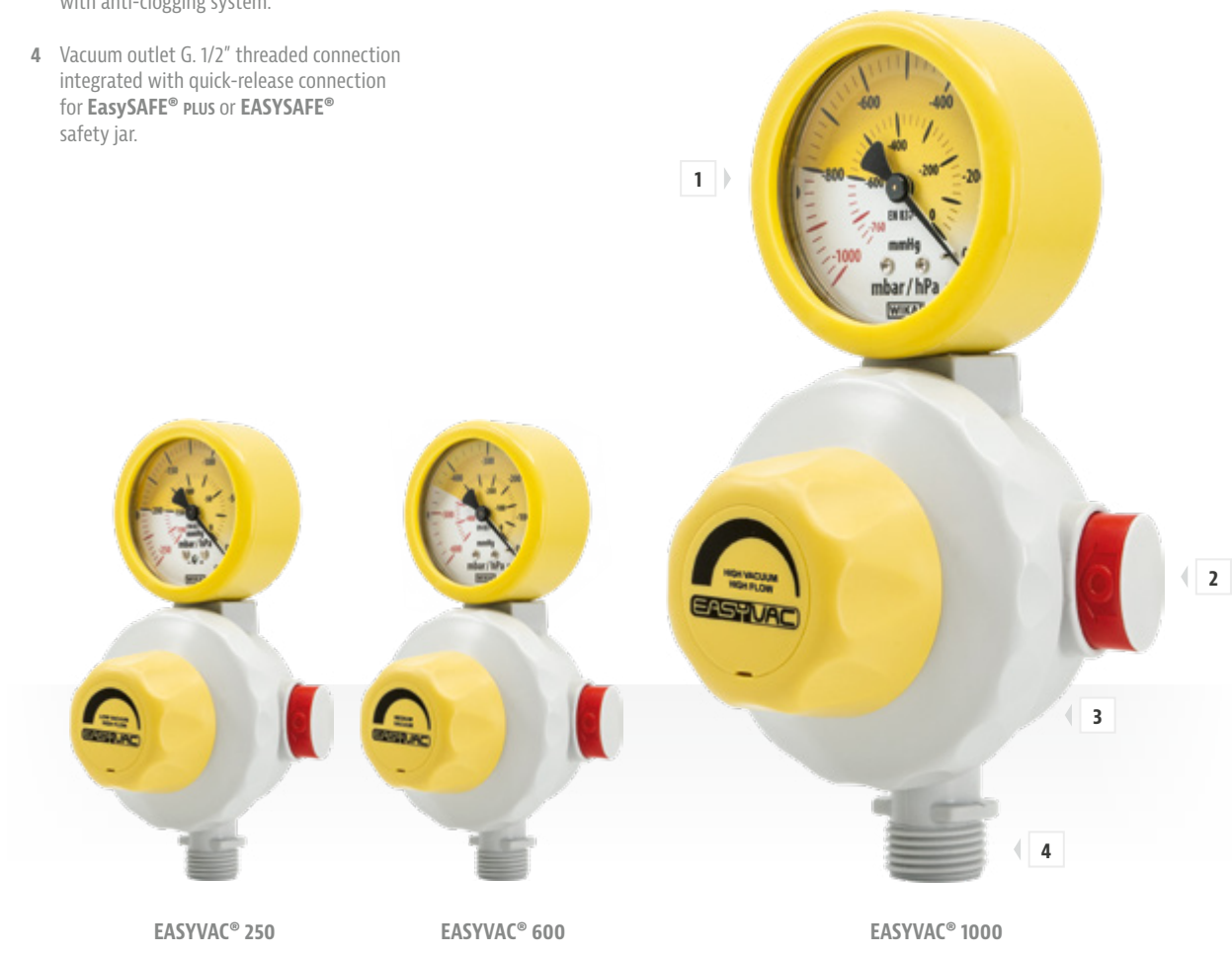
Collection jars
from p. 96



Probes
and Accessories
from p. 103

	EASYVAC® 250	EASYVAC® 600	EASYVAC® 1000
SIZES (LxWxH)	103x92x170 mm		
WEIGHT	0.42 Kg	0.37 Kg	0.37 Kg
MAXIMUM SUCTION RATE	50 L/min. ±5 L/min. at -220 mbar	72 L/min. ±5 L/min. at -550 mbar	105 L/min. ±5 L/min. at -950 mbar
MAXIMUM ADJUSTABLE DEPRESSION	-220 mbar ±20 mbar	-550 mbar ±20 mbar	-950 mbar
VALVE PROTECTING AGAINST EXCESSIVE NEGATIVE PRESSURES	preset with anti-clogging system	preset with anti-clogging system	N/A
MAXIMUM SUPPLY DEPRESSION	-950 mbar		
SUCTION ADJUSTING SYSTEM	with membrane		
STANDARD VACUUM SUPPLY CONNECTION	ISO G. 1/4" M.		
OUTLET CONNECTION	ISO G. 1/2" M. + quick release system for EASYSAFE® or EasySAFE® PLUS safety jar connection		
I/O SWITCH	quick push button type		

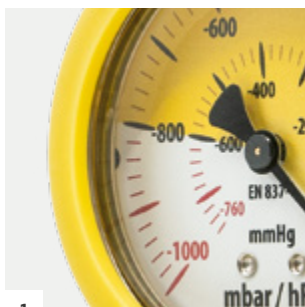
- 1 **Vacuum gauge** with colored sectors and double scale (mbar/hPa or mmHg), for easy reading of set vacuum values. Silicone cover and anti shock support.
- 2 **Quick I/O** push switch-button.
- 3 De-pressure excess safety valve (for **EASYVAC® 250** and **EASYVAC® 600** only) with anti-clogging system.
- 4 Vacuum outlet G. 1/2" threaded connection integrated with quick-release connection for **EasySAFE® Plus** or **EASYSAFE®** safety jar.



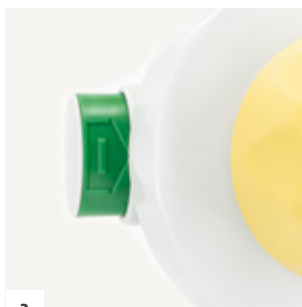
EASYVAC® 250

EASYVAC® 600

EASYVAC® 1000



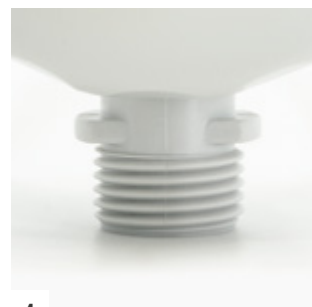
1



2



3



4